

iClicker's Purchase and Registration Guide:

-Purchase your iClicker2 remote from PLC-bookstore, the University Store (\$56) or online. Reef is not recommended due to a high number of issues we have seen in the past.

-Register your iclicker remote by going to iClicker website (<https://www.iclicker.com/register-a-remote>) and providing the information required.

Country:

First Name:

Last Name:

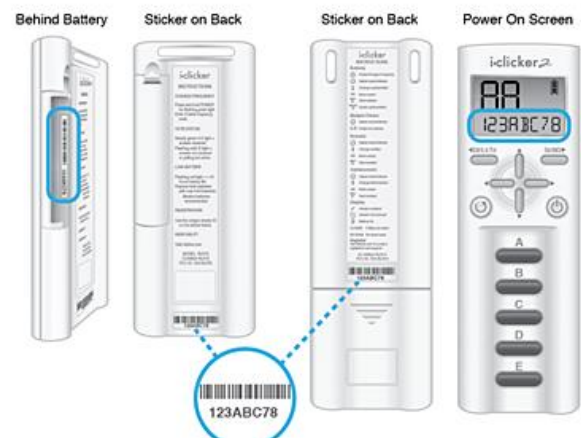
Student ID:

The ID assigned by your school. Check your syllabus or ask your instructor if you are unsure what to enter.

Email:

Remote ID:

The 8-character code found on your remote (see image). Codes only use letters A-F and numbers 0-9.



If you are asked “Which software will your instructor use in class?”, select “iClicker Classic (formerly iClicker 7)”.

For “ Which Learning Management System does your institution use?”, select “My institution does not use an LMS”.

Your “Student ID” is the same as your W# , as shown on your student ID card.

The “Remote ID” is typically found at the back of the remote next to a barcode and it is displayed for a few seconds on iClicker2 LCD display when you turn it ON and it is displayed for a few seconds on iClicker2 LCD display when you turn it ON (you may need to turn it ON/OFF a few times to write it down).